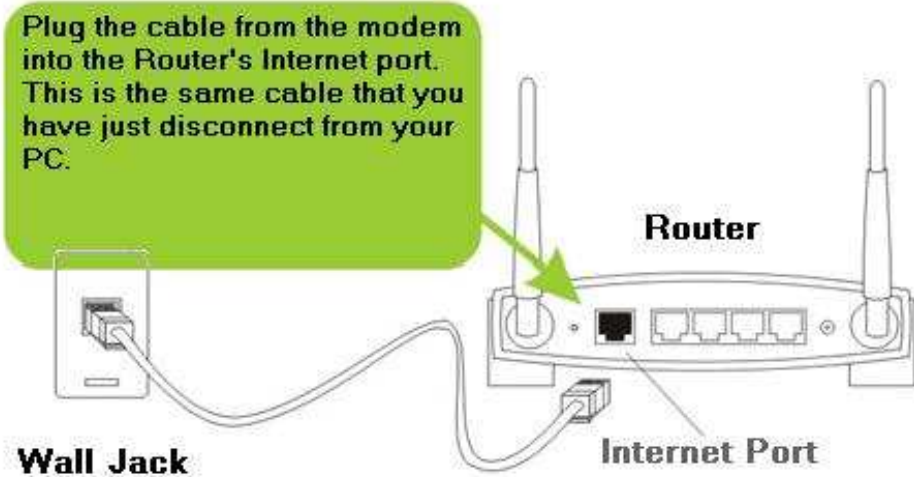
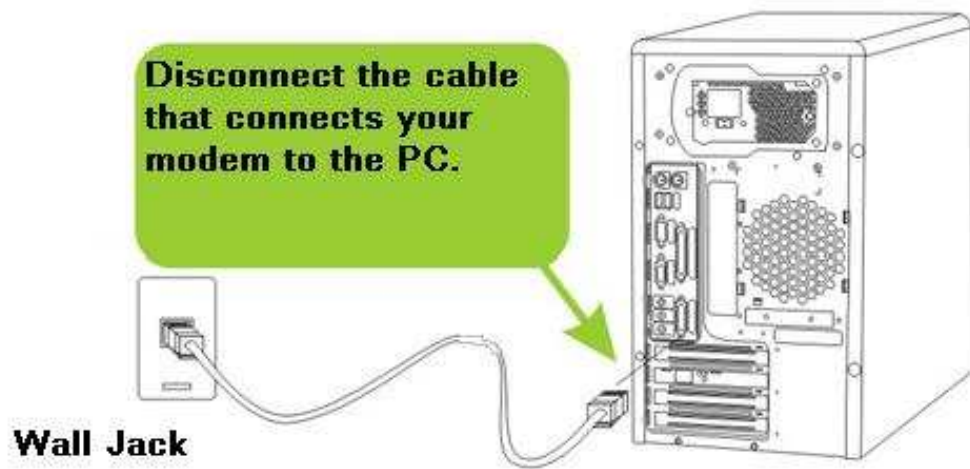
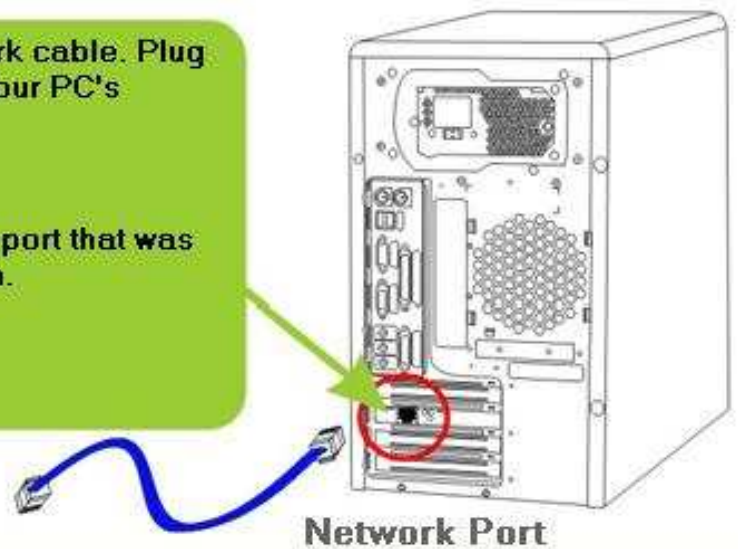


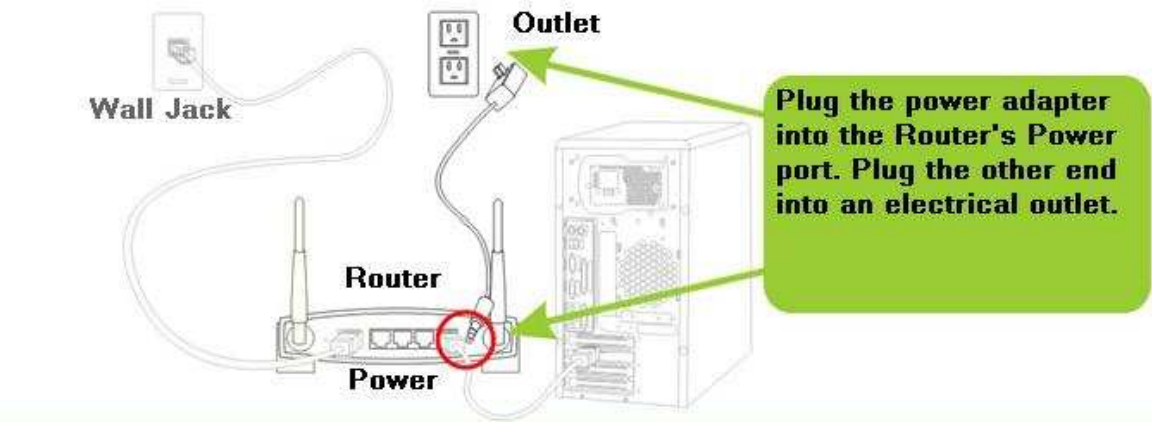
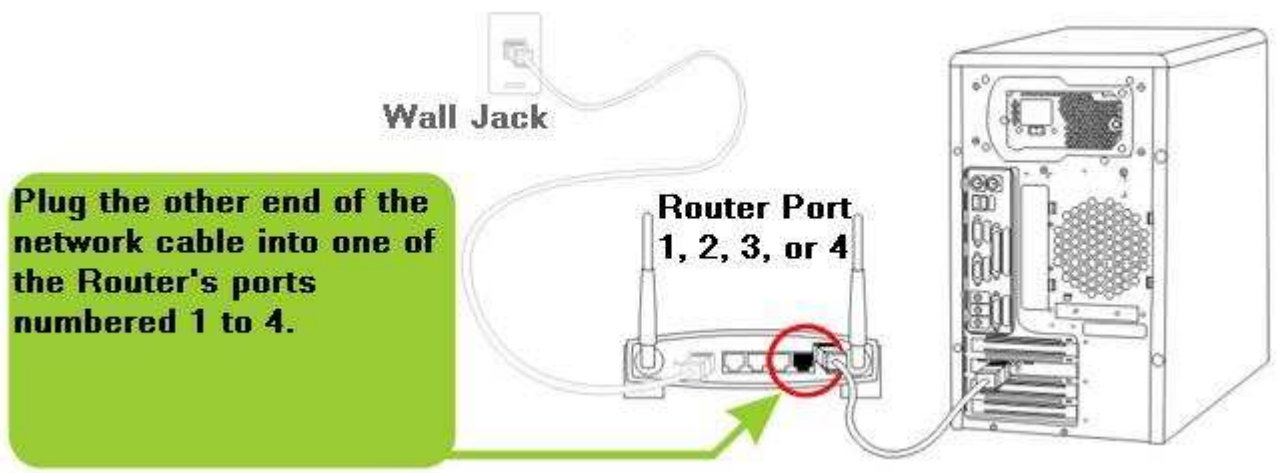
Physical Router Installation



The Router come with a blue network cable. Plug one end of the network cable into your PC's network port.

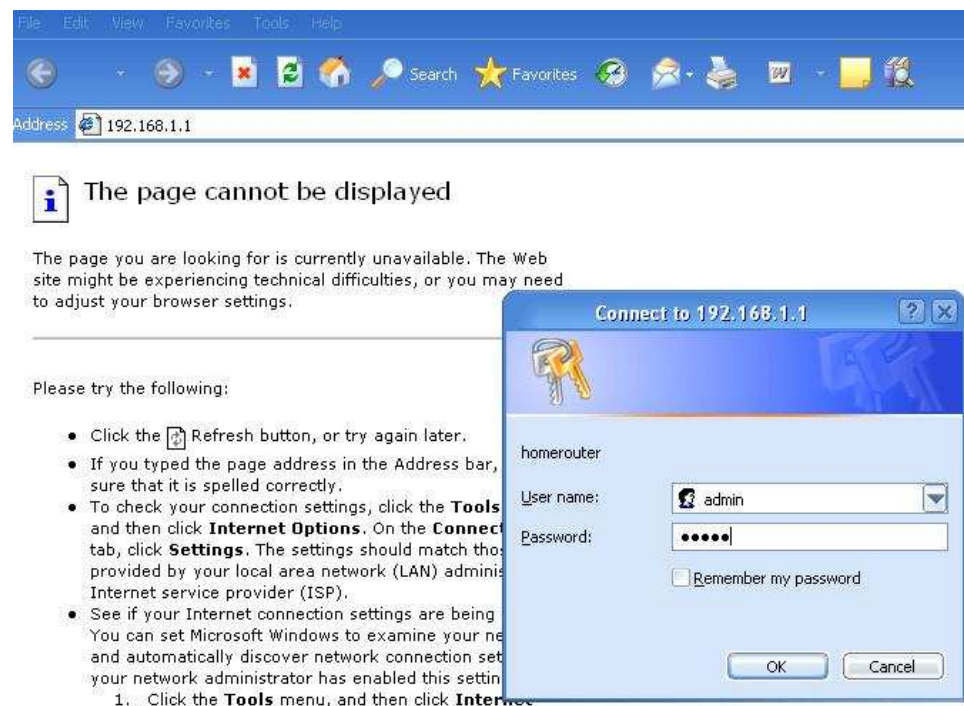
Your PC's network port is the same port that was previously connected to the modem.





Router Configuration

Open up internet explorer type in the address **192.168.1.1** then hit enter



The screenshot shows an Internet Explorer browser window with the address bar set to **192.168.1.1**. The main content area displays an error message: "The page cannot be displayed". Below the error message, there is a list of troubleshooting steps. A "Connect to 192.168.1.1" dialog box is overlaid on the page, showing a login form with the following fields:

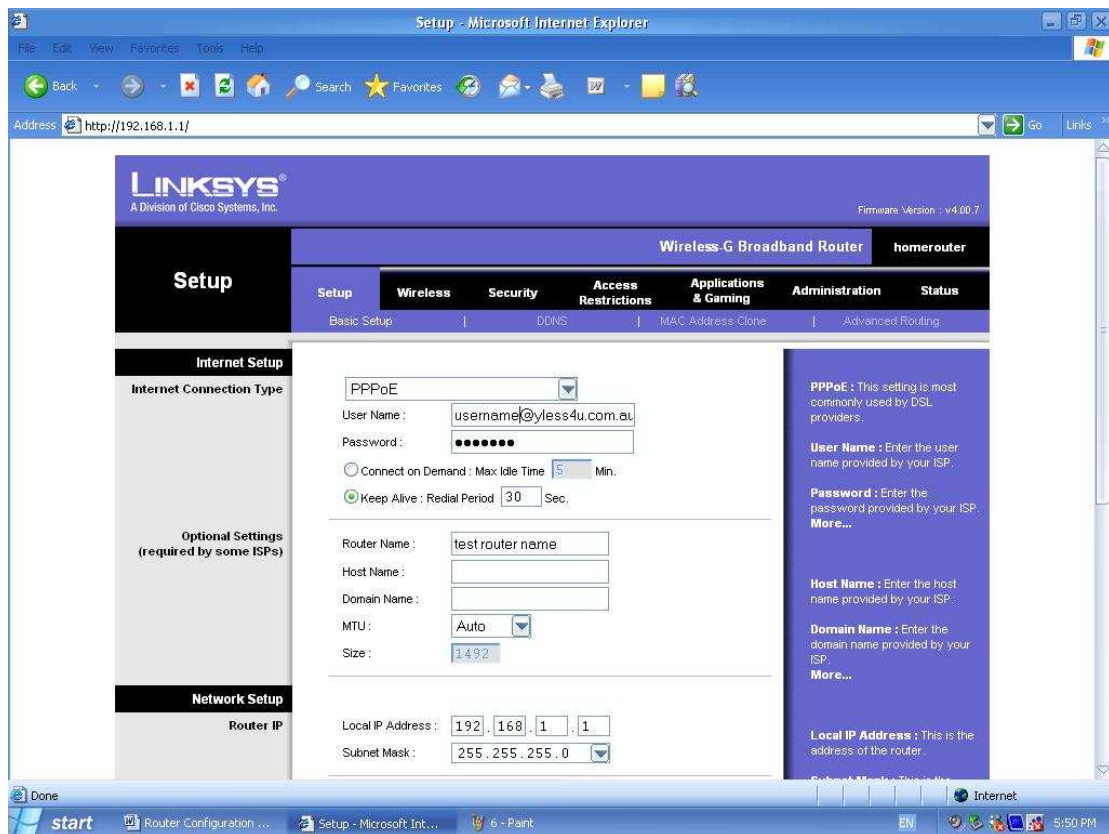
- homerouter
- User name: admin
- Password: [masked]
- Remember my password
- OK
- Cancel

Please try the following:

- Click the Refresh button, or try again later.
- If you typed the page address in the Address bar, sure that it is spelled correctly.
- To check your connection settings, click the **Tools** menu and then click **Internet Options**. On the **Connections** tab, click **Settings**. The settings should match those provided by your local area network (LAN) administrator or Internet service provider (ISP).
- See if your Internet connection settings are being updated. You can set Microsoft Windows to examine your network and automatically discover network connection settings if your network administrator has enabled this setting.
 1. Click the **Tools** menu, and then click **Internet Options**.

It will prompt you for a **User name:** and **Password:**
Enter in **admin** and **admin** respectively then click **OK**

The setup page for the router will then come up:



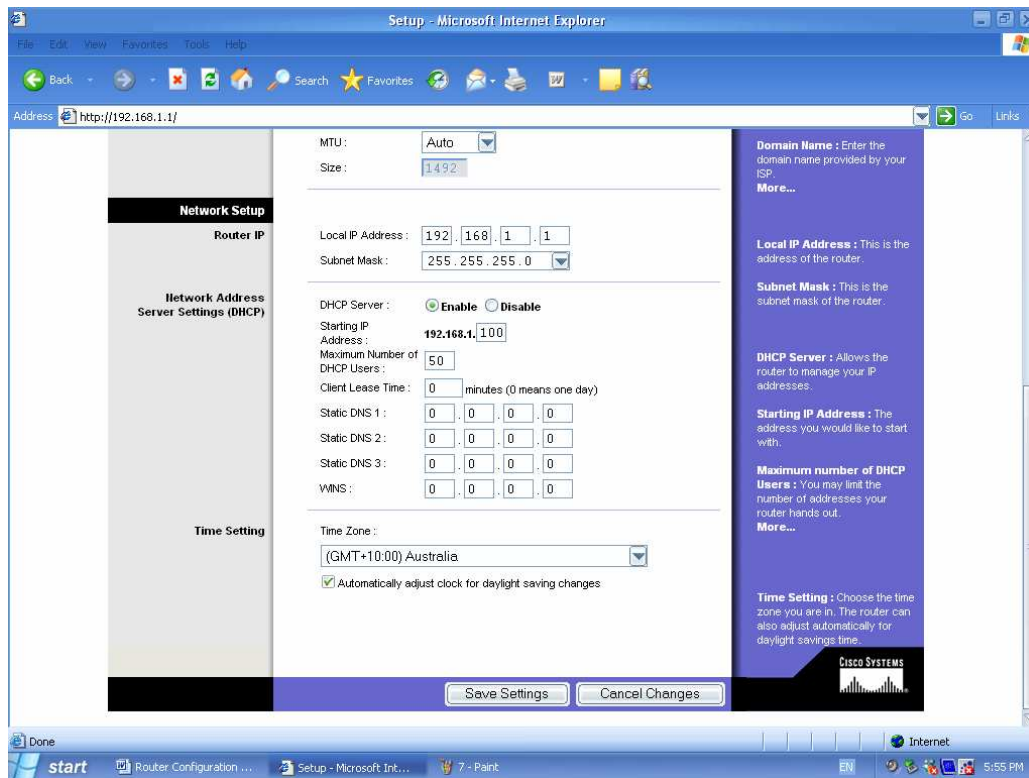
Choose **PPPoE** as the internet connection type

Click on **User Name:** and enter in your Yless4U username. Make sure to enter in @yless4u.com.au after it, otherwise the router will not know where to look for the service.

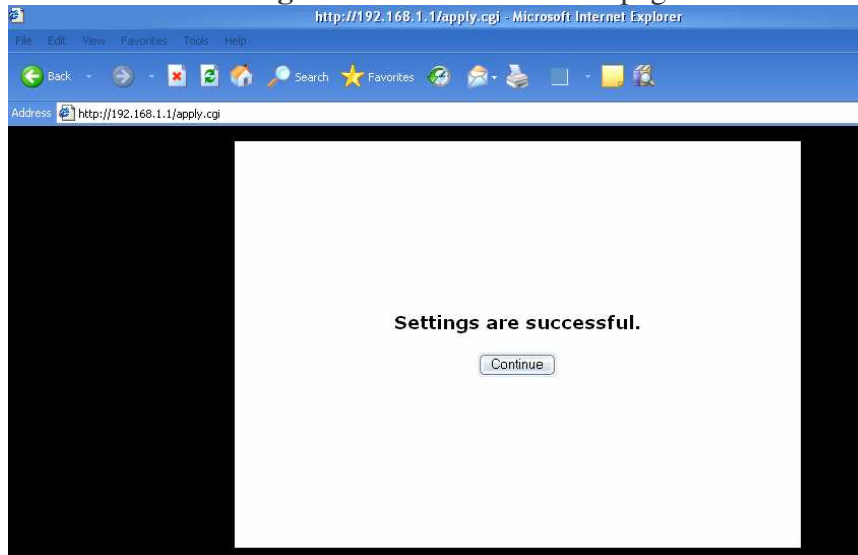
Click on **Password:** and enter in your Yless4U password

Enter in a name for your router in **Router Name:**

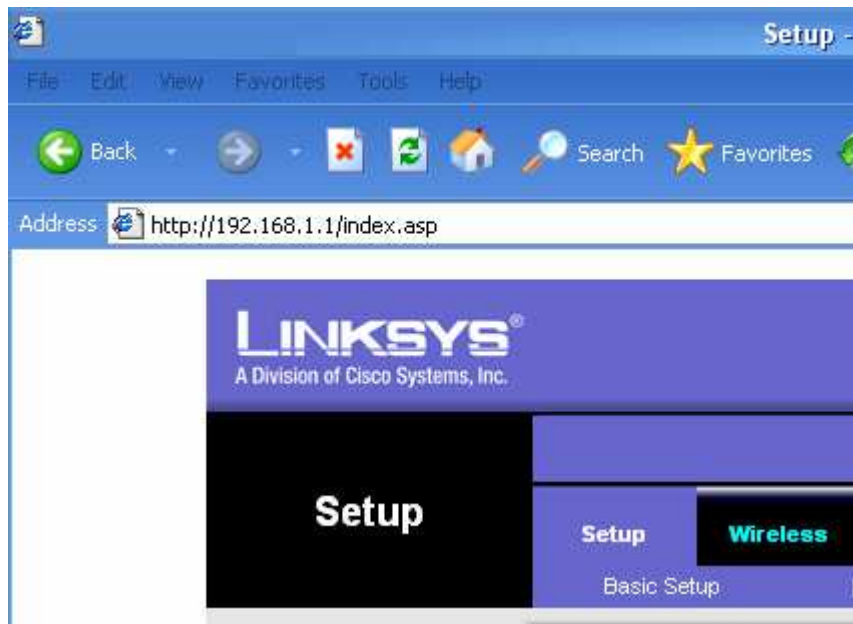
Scroll down the page and change the routers **Time Zone** to (GMT+10:00)Australia



Click on **Save Settings** down the bottom of the page

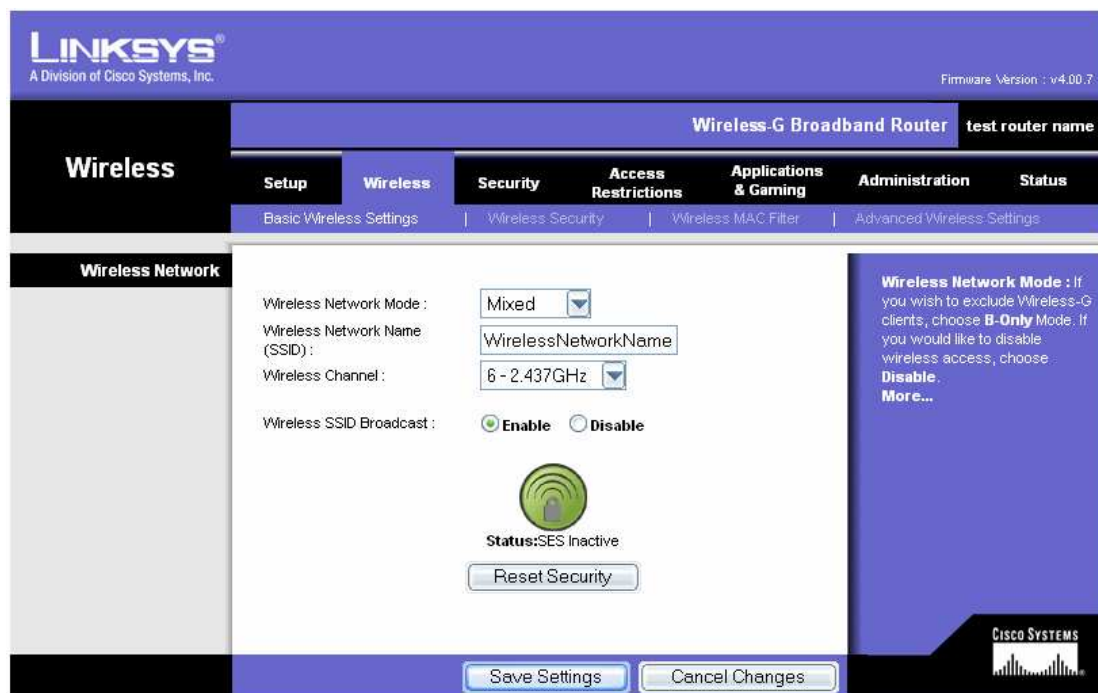


The above screen will come up. Click **Continue**.



Click on the **Wireless** tab next to the setup tab as shown above

The Basic Wireless Settings page will be displayed.



Choose a **Wireless Network Name** for your wireless network.

Choose a **Wireless Channel**. Please ask Yless4U what channel to use for your internal network. They will be able to advise you of what channel to use as to not interfere with your Yless4U signal.

Click on **Save Settings**. The Settings are successful screen will be displayed, click **Continue**.

You have now finished basic configuration of your wireless router!

Yless4U recommends you implement wireless security on your wireless network to prevent unauthorized access.

Yless4U also recommends changing the default username and password away from **admin** and **admin**