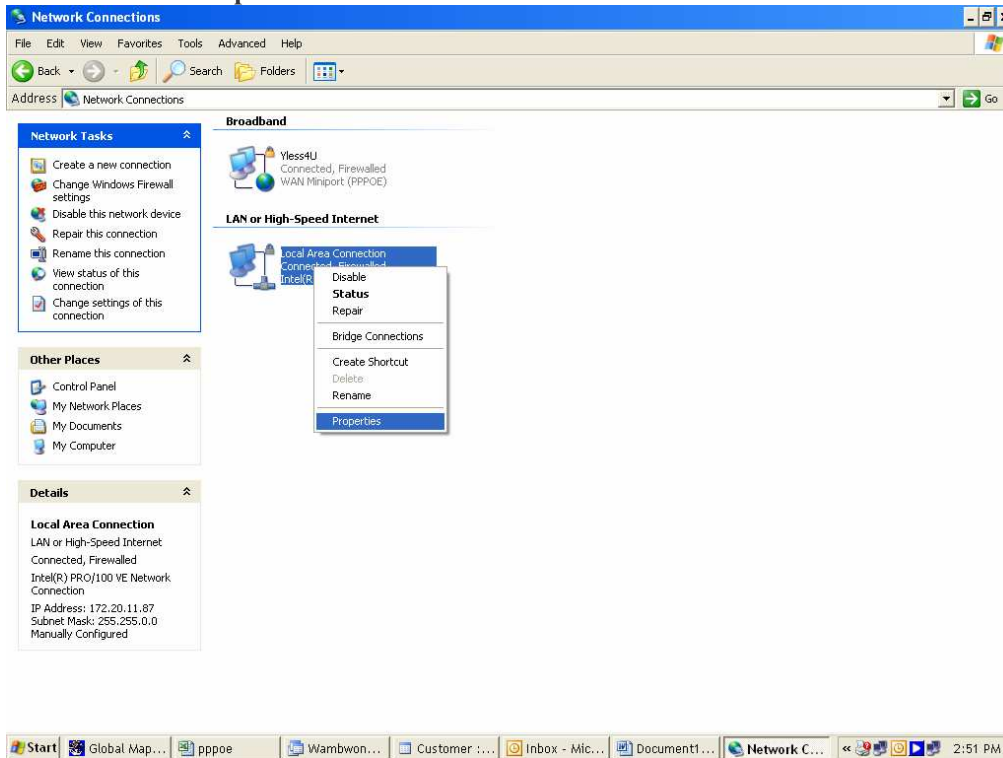
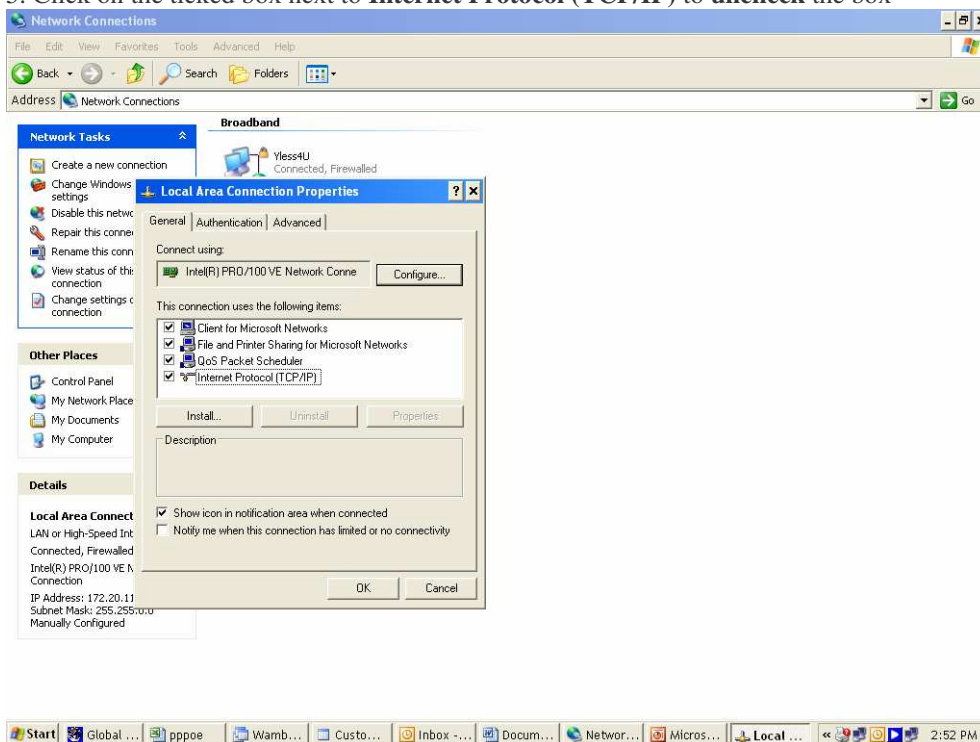


To connect to PPPoE using Windows XP

1. Click on the start menu
2. Click on **Control Panel**
3. Click on **Network Connections**
4. Right Click on **Local Area Connection**
 - i: Make sure it is not disabled (click on enable if it is)
 - ii: then click on **Properties**

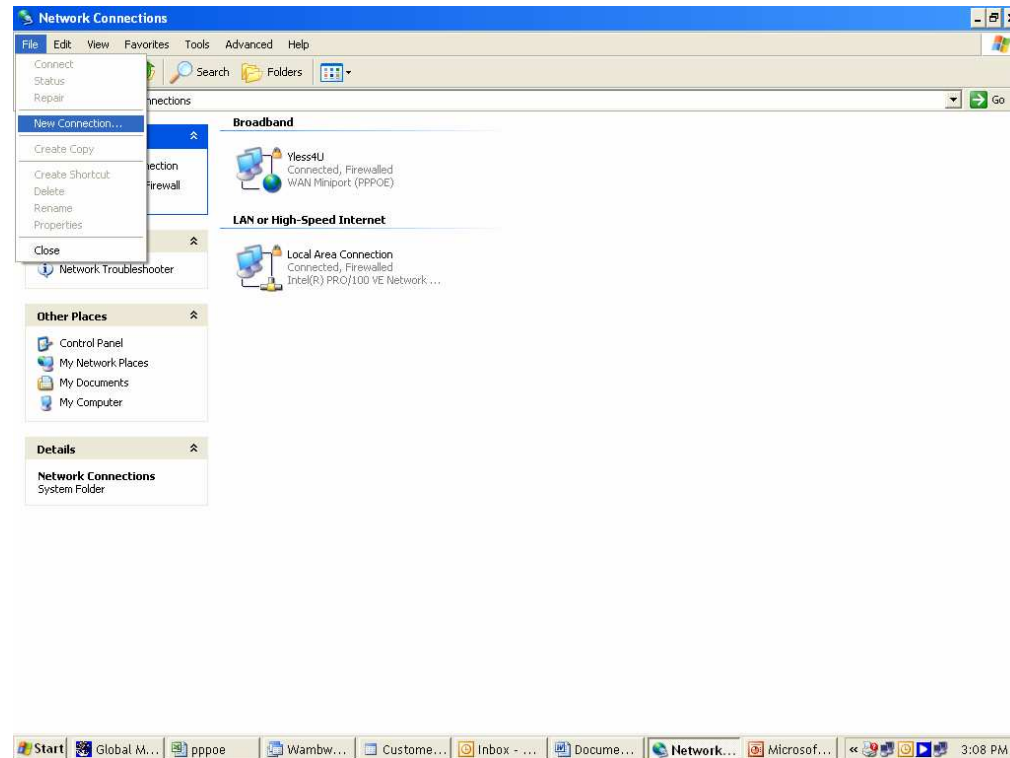


5. Click on the ticked box next to **Internet Protocol (TCP/IP)** to **uncheck** the box



6. Click on **OK**, a warning about printer sharing will come up, click on **OK**

7. In Network connections (currently open on screen) click on file, then on New Connection



8. Follow the wizard – click on **Next**

9. Click on **Connect to the Internet** then click **Next**

10. Click on **Setup my connection manually** then click **Next**

11. Click on **Connect using a broadband connection that requires a username and password** then click **Next**

12. Enter in the ISP Name of **Yless4U** then click **Next**

13. If **Create this connection for:** comes up, click on **Anyone's use** then click **Next**

14. Enter in the **User name** of the user, eg. username@yless4u.com.au then enter their password in both **Password:** and **Confirm Password:**

The next two boxes are dependant on the customers preferences, ask them what they would like, leave them both checked if unsure

Click **Next**

15. Tick the box **Add a shortcut to this connection to my desktop** and click **Finish**

16. You have now successfully created a PPPoE connection to Yless4U!