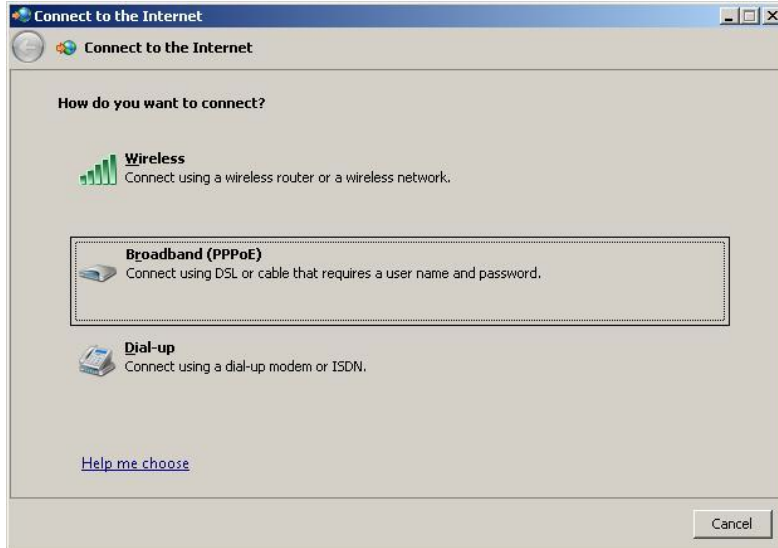


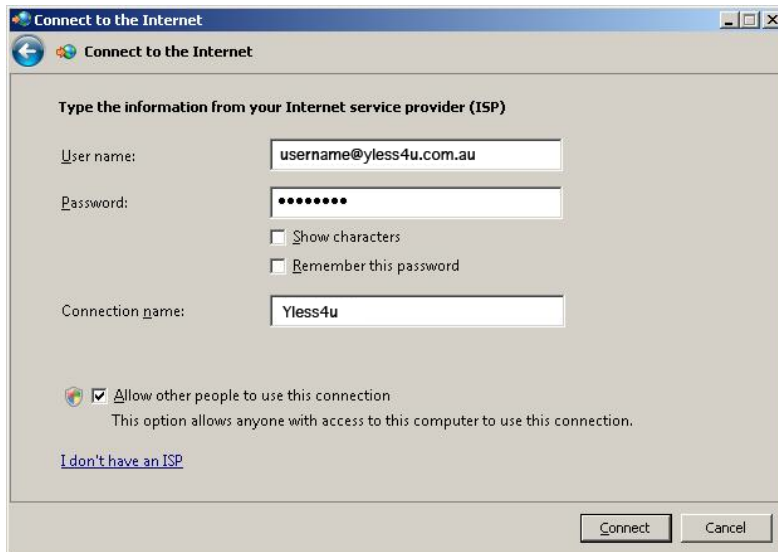
Setting up a connection to Yless4u - Vista

Windows Vista PPPoE Connection Setup

1. Begin by opening the Windows Vista Control Panel. Click the Start orb, then select Control Panel.
2. Click on the link labeled Connect to the Internet. The following dialog box should pop up:



3. Choose the option for Broadband (PPPoE). The following dialog box should appear:



4. The wizard will now require you to enter a username and password. Enter the username you selected when you signed up for your account in the User name field. You must add the @yless4u.com.au domain to the username here. For example: a valid username would be "joe@yless4u.com.au", but just "joe" would not be valid. Enter the password you selected when you signed up for your account in the Password field. In the Connection name box, fill in Yless4u. You must now also decide who will be able to use the connection by either checking or not checking the Allow other people to use this connection box. This check box is usually checked.
5. Click the Connect button and Vista will verify the connection. After it has finished this process, click the close button.
6. To utilize this connection, click the Start orb, select Connect To and select the connection labeled Yless4u.