

# Mac OSX PPPoE Configuration

---

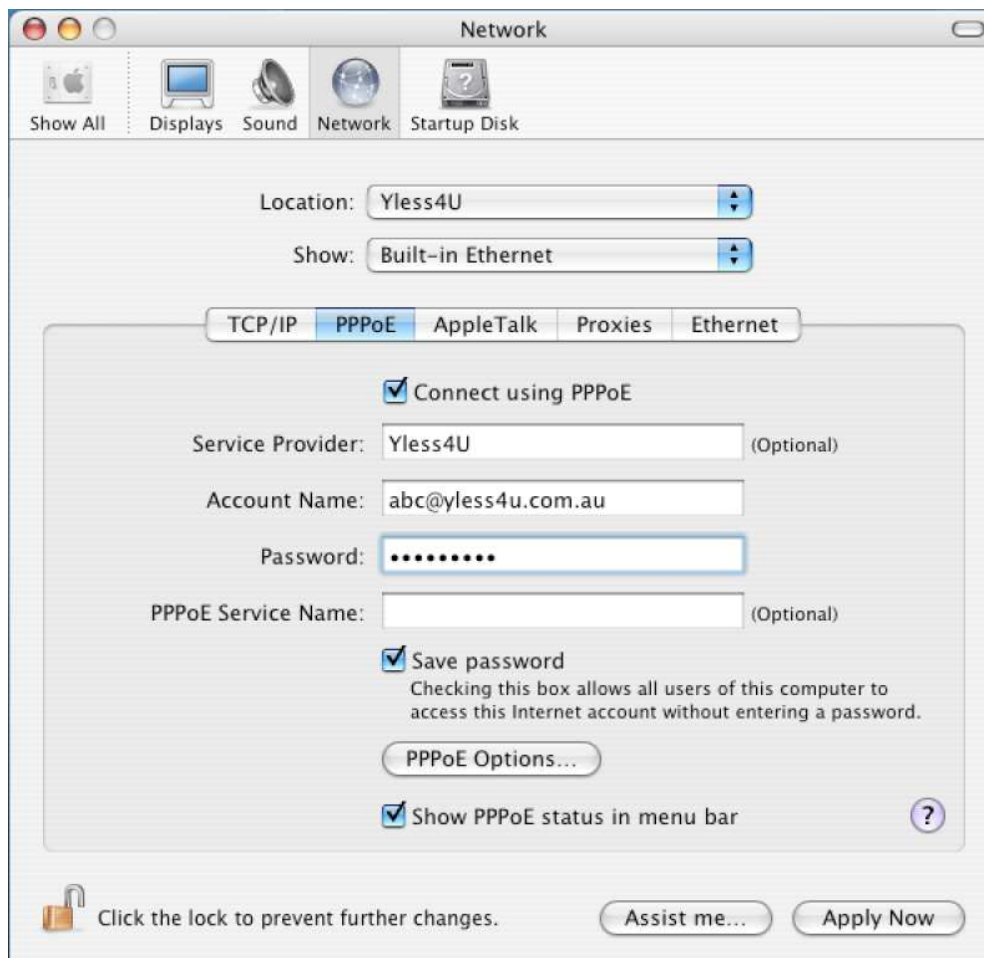
1. Click the **System Preferences** icon on your **Dock**.

*System Preferences*



2. Find and click on the **Network** icon in the **Internet & Network** section. The Network Panel will open.

3. Click the arrow on the **Location** box and choose **New Location**. Name the connection **Yless4U**, then click the **OK** button.



4. Click the arrow on the **Show** box and choose **Built-in Ethernet**.
5. Click on the **PPPoE** tab.

6. Click the **Connect using PPPoE** box.
7. In the **Service Provider** box type **Yless4U**
8. Leave the **PPPoE Service Name** box empty.
9. In the **Account Name** box, type your Yless4U Username followed by "@yless4u.com.au" (e.g. **abc@yless4u.com.au**).
10. Enter your Yless4U password in the **Password** box.
11. If you require the computer to remember your password, check the **Save password** box.
12. If you require the computer to show your PPPoE Status, check the box for **Show PPPoE status in menu bar**.
13. Click **Apply Now** then close the box.

## How to Connect to Yless4U

1. On your desktop, find and double-click the **Hard Drive** icon.

*Hard Drive*

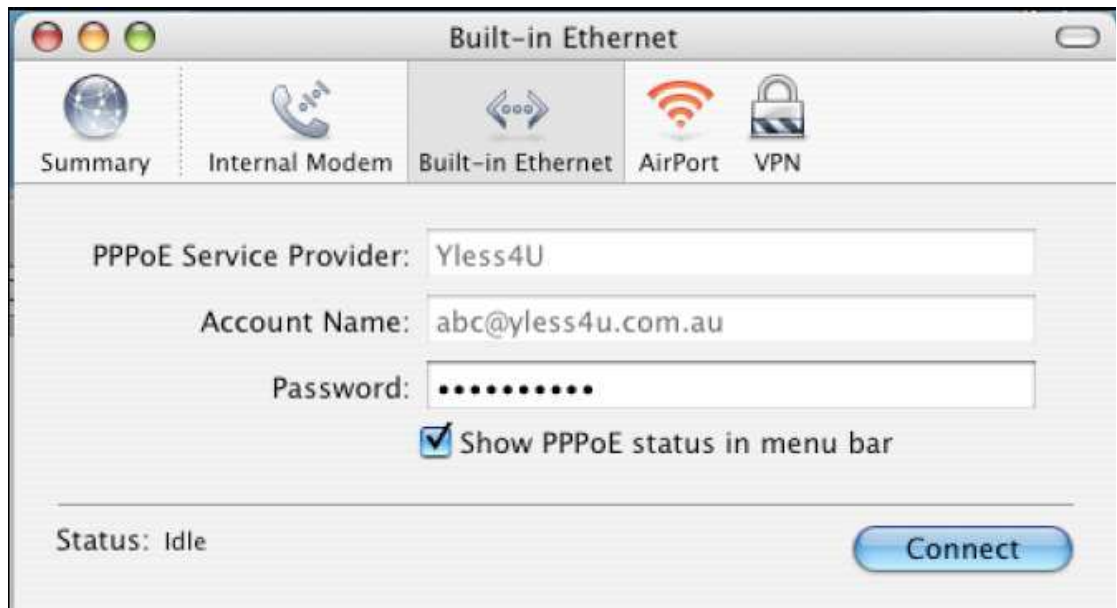


2. Double-click the **Applications** folder.

*Applications*



3. Double-click the **Internet Connect** application.



4. Ensure the **Configuration** box shows **Built-in Ethernet**.

5. Click the **Connect** button.

6. Open your browser, and start viewing Web pages!